

Ireesh Housing brings out the opportunity to invest in not just a Farm Villa but also an opportunity of income that can last a lifetime on the piece of land Parcel owned by you.



## HEMA GARDENS

A project developed in an 10 acre span with the natures blessing of 180 degree Valley view from each plot. You can be assured of the appreciation that you will witness in the near future with the developments happening within the community.



## PROJECT HIGHLIGHTS

**Hema Gardens** is located at Mannavanur village, Kodaikanal with nature rich greenery, Valley View in and around the project.

- **Key highlights:**  
Total extent: **10 Acres**
- Farm Plots ranging from **9135 Sq ft onwards**
- Fully Developed Gated community with Basic amenities (Concrete Roads, Water Tank etc.)
- Each plot will be electrically fenced for night safety.
- 24/7 Security provision
- First 3 year's maintenance of each plot by Ireesh Housing.
- Upper Kodai 2<sup>nd</sup> Tourist Spot of Kodaikanal
- Natural lake and boating



# PLANTATIONS & FARMING

TO MAKE YOUR LAND A BETTER PLACE





## PLANTATIONS & FARMING TO MAKE YOUR LAND A BETTER PLACE

It's our **MISSION** to make our mother earth a Better & Greener place to live. With **IREESH GROUP** we firmly believe that our children need's a better space for living that is much more greener & non polluted than what you have, We at Ireesh Group is committed in developing & delivering the land parcel that has all the natural resource & facilities to achieve our MISSION.

We don't just develop a beautiful gated community each parcel of plot in the layout will have varieties of plants | Fruits | Gardening & Farming options so as to make the community Farm Villa a green zone tailor made for you.

These are the few Plantations & Vegetation that your precious parcel of land will cherish upon:

Avocado Tree | Plumbs | Fashion fruit | Berry's | Guava | Custard Apple | Potato | Radish | Carrot | Beans | Double beans & more....



# PLANTATIONS & FARMING

TO MAKE YOUR LAND A BETTER PLACE





# ASSURED RETURNS

## ON YOUR INVESTMENT

- Customize Your Farm Villa with the tailored plan Options that suits your style & budget.
- We Manage, Maintain the Farm Villa's and all the amenities Provided by us in the commitment.
- A fixed return as mentioned in the agreement shall be shared with the Buyers during this period.
- Owners will enjoy a 12 day stay in their Farm villa each year or as per the terms agreed.
- Your Private guest is welcomed by Ireesh group and the revenue is shared as per the terms agreed.



RUSSET HOUSE




RUSSET HOUSE



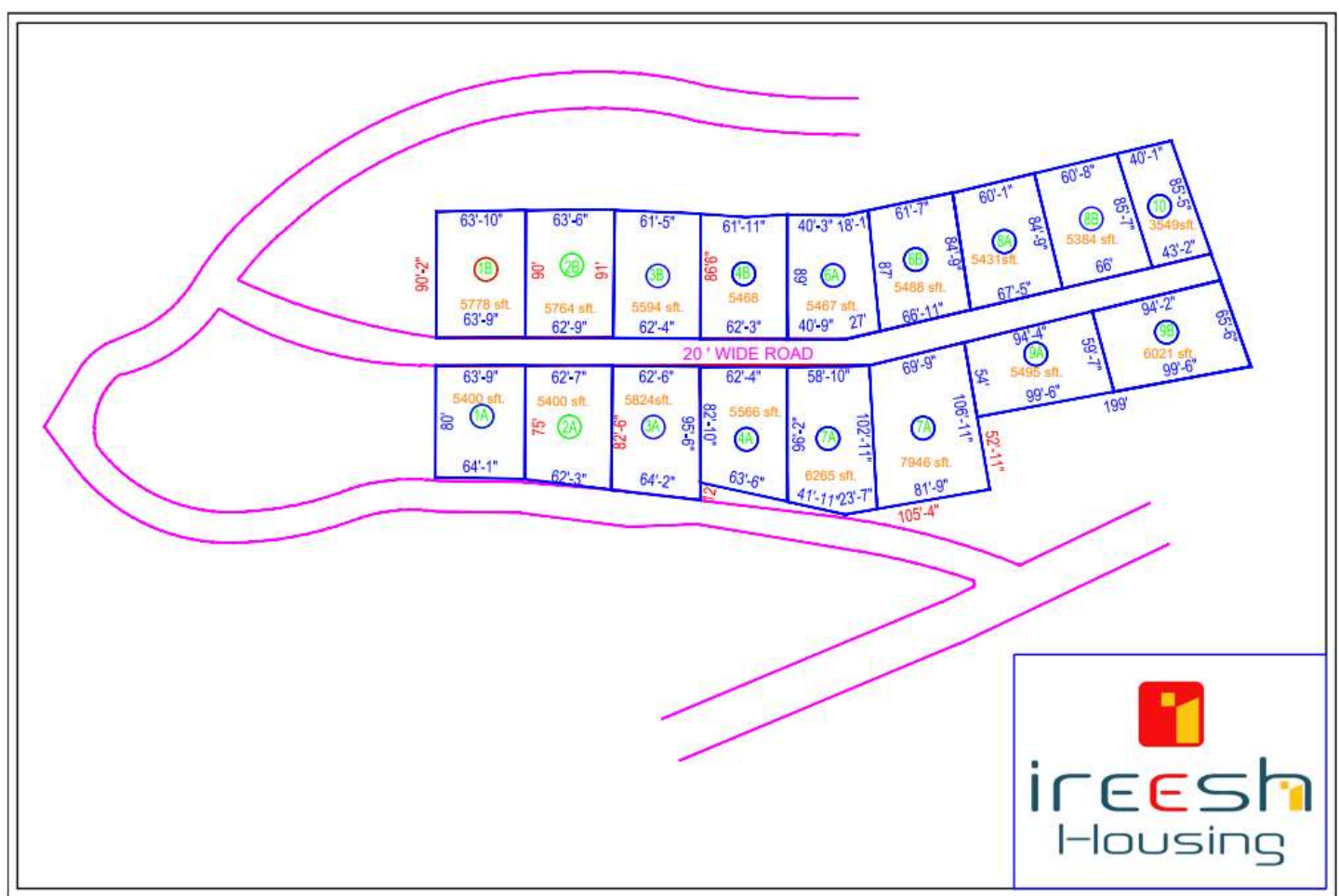
RUSSET HOUSE

The  
**NOOK**  
House  
Tiny & Cozy Spot by nature

 More in offering

 [www.ireeshousing.com](http://www.ireeshousing.com)





The  
**NOOK**  
 House  
 Tiny & Cozy Spot by nature



More in offering

[www.ireeshhousing.com](http://www.ireeshhousing.com)



## Area statement

CHOOSE YOUR PLOT

Plot – 1A	64' Frontage	2.25 GROUNDS	5400 SQFT
Plot – 2A	62.3 Frontage	2.50 GROUNDS	5400 SQFT
Plot – 3A	64.2' Frontage	2.55 GROUNDS	5824 SQFT
Plot – 5A	64.8' Frontage	2.95 GROUNDS	6265 SQFT

Plot – 1B	63.9' Frontage	2.7 GROUNDS	5778 SQFT
Plot – 2B	62.9' Frontage	2.7 GROUNDS	5764 SQFT
Plot – 3B	62.4 Frontage	2.6 GROUNDS	5594 SQFT
Plot - 8	67.9 Frontage	2.6 GROUNDS	5467 SQFT

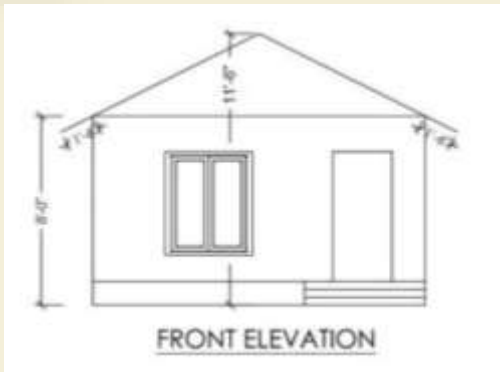
 More in offering



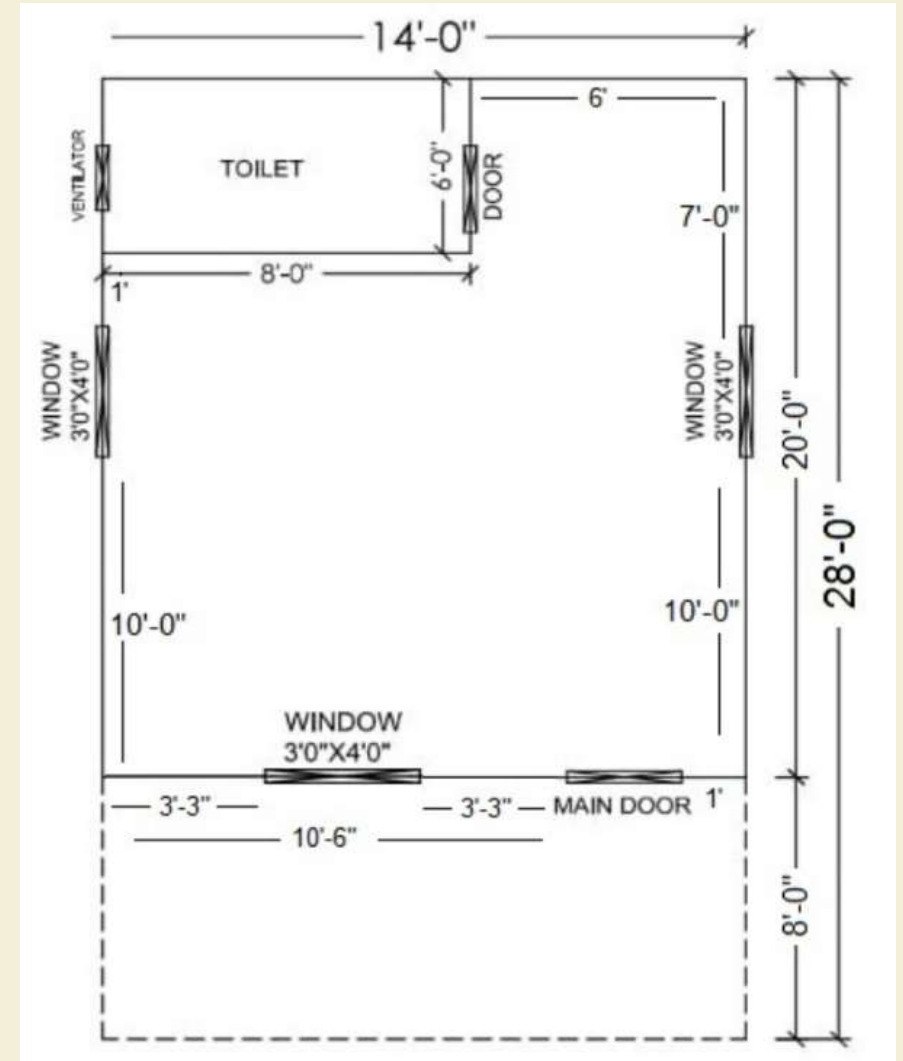


## Russet House - 1

CHOOSE YOUR PLAN



**Rs.505/- Per Sq.ft**



Land cost

5400 SQFT \*  
Conditions apply

Wood House

392 SQFT

Project Cost

27,27,000/-



[www.ireeshousing.com](http://www.ireeshousing.com)

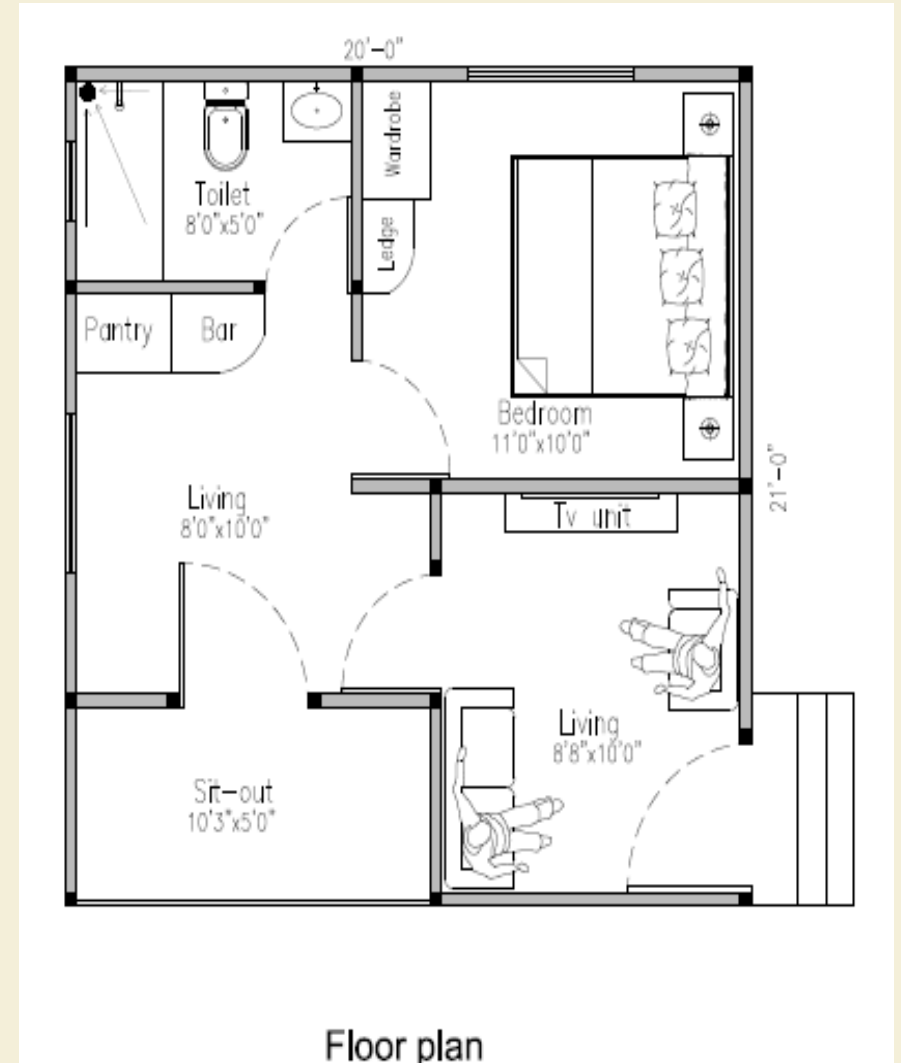


## Russet House - 2

CHOOSE YOUR PLAN



**Rs.550/- Per Sq.ft**



Floor plan

Land cost	5400 SQFT * Conditions apply
Wood House	420 SQFT
Project Cost	29,69,000/-

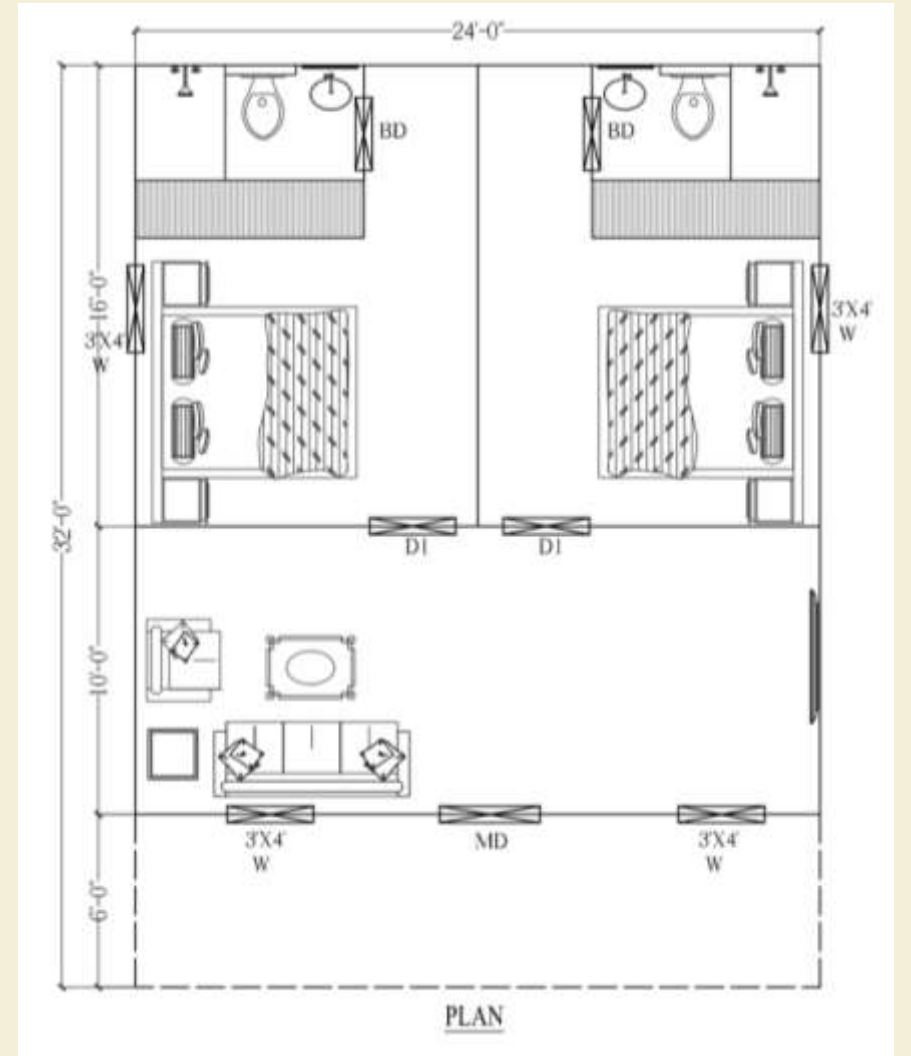


## Russet House - 3


CHOOSE YOUR PLAN



**Rs.665/- Per Sq.ft**



Land cost	5400 SQFT * Conditions apply
Wood House	768 SQFT
Project Cost	35,90,000/-

 More in offering



## The News Article's Published about "Mannavanur"

CHENNAI

THE HINDU • SUNDAY, MAY 17, 2015

# Pride of Kashmir now comes to Kodaikanal

K. Raju

**KODAIKANAL:** Kodaikanal will from now on share the pride of Kashmir in growing saffron. A small group of farmers have successfully grown saffron at Kavunji and Poon-di villages on the Upper Kodaikanal hill, thanks to excellent climate and enriched soil condition.

Success of two-year field trial was the outcome of the hardwork and tireless efforts of farmers in these villages, said R. Murthy, former member of the National Horticulture Board and president of the Tamil Nadu Flower Growers Association, who introduced saffron to farmers in Kodaikanal.



*A Kashmir saffron flower raised at Kavunji village on the Kodaikanal hill.*

conducted a field trial. Now, the results are amazing.

In Kashmir, the size of

prevalence of required temperature, its growth is excellent because of sunlight, Mr. Murthy added.

## Helicopter service to Kanyakumari, Ramand soon to boost tourism

Staff Reporter

**KODAIKANAL:** Helicopter services will soon be introduced in Madurai covering three major tourist attractions in southern Tamil Nadu to draw more foreign tourists and provide better transport facilities, said Minister for Tourism S.P. Shanmuganathan.

Delivering the keynote address at the inaugural of a 10-day summer festival and two-day flower show at Bryant Park here on Saturday, he said that helicopter services will be introduced to Kanyakumari, Mandapam in Ramanathapuram and to Kodaikanal from Madurai.

To begin with, the

A four-acre site has been identified in Kodaikanal for helicopter tourism

by a section of people and some political parties on the proposed wildlife sanctuary in Kodaikanal and its eco sensitive zone.

He clarified that no farmer or local person would be affected on the hill. The eco sensitive zone and wildlife sanctuary would be established only within 27 reserved forests of Kodaikanal. No habitations or villages

## The News Article's Published about "Mannavanur"



Dated:  
13.04.2015





# Valley View from Each Plot


## A NEW DESTINATION FOR Nature Lovers



Valley View Premium Plots  
**"Mannavanur"**  
Kodaikanal

Plot Size **9135** Sqft  
On Wards

Gated Community Plots **27** ₹ Lakhs

 [www.ireeshousing.com](http://www.ireeshousing.com)  99406 73300

## SPOT THE PLOT Double Your Investment



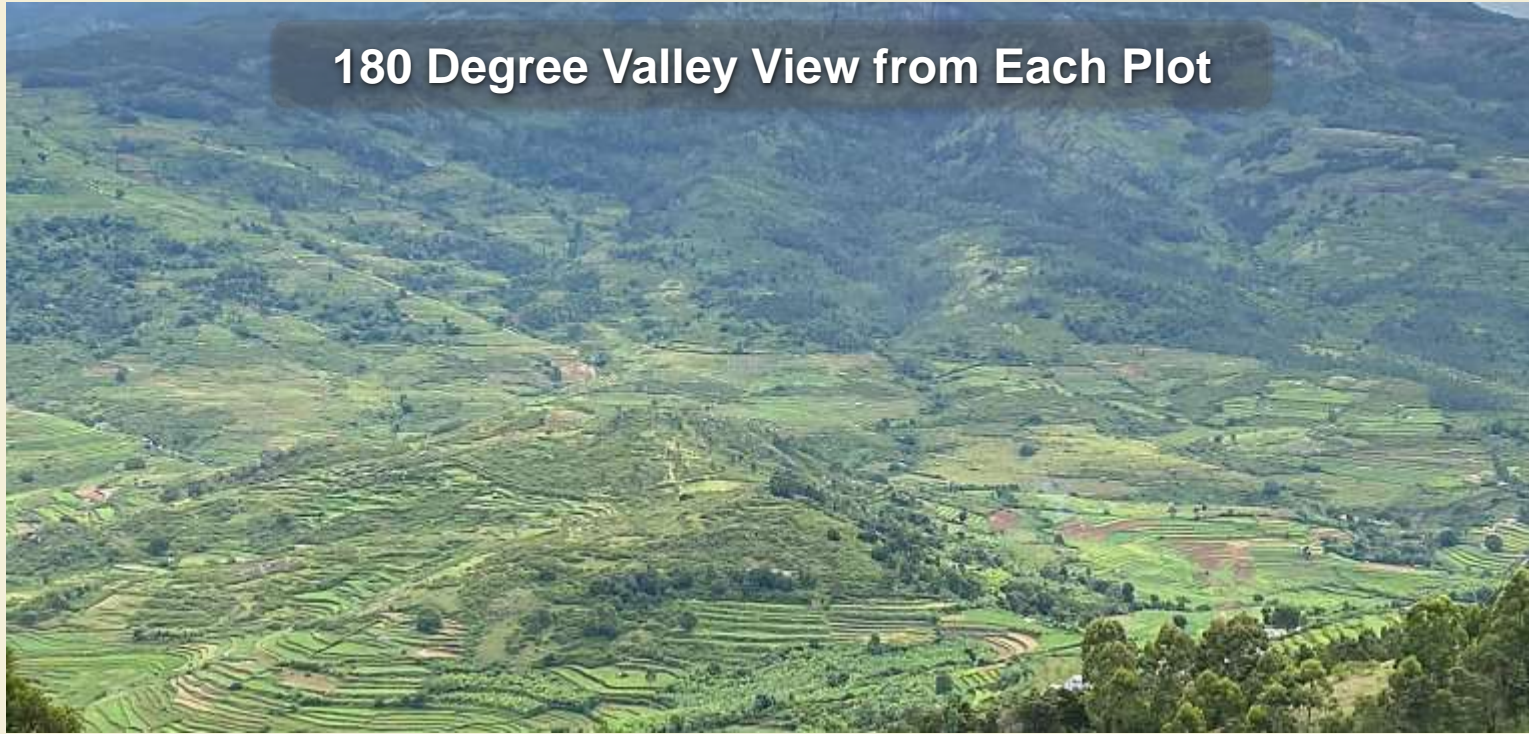
Valley View Premium Plots  
**"Mannavanur"**  
Kodaikanal

**3** YEARS FREE MAINTENANCE | **80%** COMMON AREA |  READY TO BUILD FARM VILLA PLOTS |  PLOTS WITH PLANTATION'S

 [www.ireeshousing.com](http://www.ireeshousing.com)  99406 73300

**INVEST TODAY**  
TO LIVE A BETTER TOMORROW

**180 Degree Valley View from Each Plot**



**Entrance**



**24' wide concrete Roads**



**INVEST TODAY**

**TO LIVE A BETTER TOMORROW**



ireesh  
Housing



**FREE**

Registration &  
3Years  
Maintenance



**FREE**

Stay in  
Kodaikanal  
for site visit



100/9A, Ammam Kovil Complex, Ponnambalam Salai,  
K.K.Nagar, Chennai - 600078

**GREEN TREE HOME STAY**



19, Pachamarathu Odai, Shanmugapuram  
Kodaikanal. FOR BOOKINGS: 9841044700



+91 99406 73300



ireeshhousing.info@gmail.com



www.ireeshhousing.com



**WILLOWS**

Valley view plots  
Kodaikanal



The  
**NOOK**  
House

Tiny & Cozy Spot by nature

**SITE ADDRESS**



**HEMA GARDENS**  
Kilanvayal Road, Mannavanur, Kodaikanal